

AW2816 Version 1.1

AW2816 version 1.1 adds the following functionality.

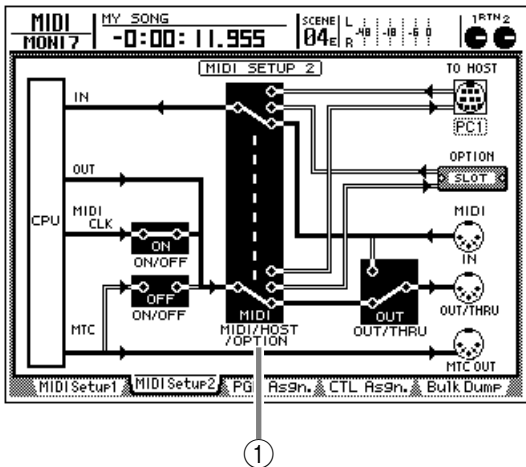
- **OPTION (option slot) can now be selected as a port for MIDI transmission and reception.**
- **You can now use a Plug-in page that displays the parameters of I/O cards that are compatible with the Mini YGDAI plug-in system.**

MIDI Setup 2 page

As the port that will be used for MIDI transmission and reception, your choices now include the Option slot as well as the MIDI OUT/THRU connector or TO HOST connector.

Press the [MIDI] key → [F2] key to access the MIDI Setup 2 page.

Please also refer to P.275 of the AW2816 Owner's manual.



① MIDI/HOST/OPTION switch

This selects the port that will be used to transmit/receive MIDI messages. Move the cursor to this area and press the [ENTER] key to cycle through the following three settings.

- **MIDI**..... The MIDI IN connector and MIDI OUT/THRU connector will be used.
- **HOST** The TO HOST connector will be used. The transmission speed is set by the TO HOST setting.
- **OPTION** The OPTION I/O slot will be used.



*The **OPTION** setting is valid only if an I/O card that can transmit/receive MIDI messages (such as the mLAN card "MY8-mLAN"; planned for availability in the near future) is installed in option slot.*

Plug-in page

Plug-in page has been added to display parameters for I/O cards compatible with the Mini YGDAI plug-in system. To access the Plug-in page, press the [PATCH] → [F4] key.

For details on the types of I/O cards compatible with the Mini YGDAI plug-in system, please consult your local distributor, or the following Internet URL.

<http://www.aw2816.com/>



*In the Plug-in page you can use **BACKUP** and **RESTORE** as additional functions. For details refer to the sections below.*

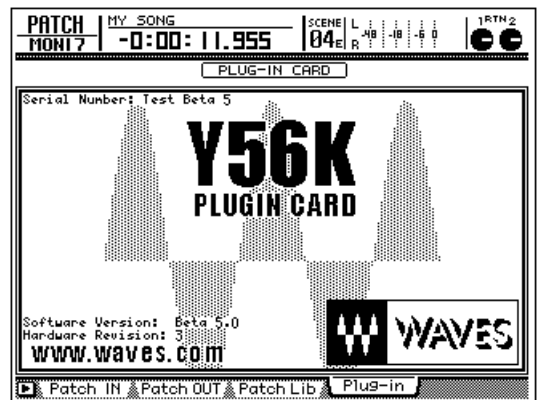
Backing up an I/O card

If an I/O card compatible with the Mini YGDAI plug-in system is installed, you can use a memory bank (MEM.BANK) to store I/O card settings.

Scene changes on the AW2816 are linked to changes of the I/O card settings, and when you store the scene (or save the song), settings of the I/O card installed in option slot will be automatically backed-up to MEM.BANK.

However if necessary, you can also perform the backup operation manually. The procedure is as follows.

- 1 Press the [PATCH] key → [F4] key to access the Plug-in page.



The contents of the Plug-in page and the operating procedure will differ depending on the I/O card that is installed. The screen shot shown above is for a prototype 56K DSP card manufactured by the Waves Corporation. For details, refer to the manual for your I/O card.

- 2 Hold down the [SHIFT] key and press the [F1] (Backup) key.

A popup window will appear, allowing you to back up the I/O card settings.



- 3 Move the cursor to the MEM.BANK button, and press the [ENTER] key.

If the memory bank already contains data, the bank name will be displayed. If it does not contain data, the display will indicate "NO DATA!"



The bank name is assigned automatically according to the type of I/O card installed. It is not possible for you to edit this name.

- 4 To execute the backup, move the cursor to the OK button and press the [ENTER] key.

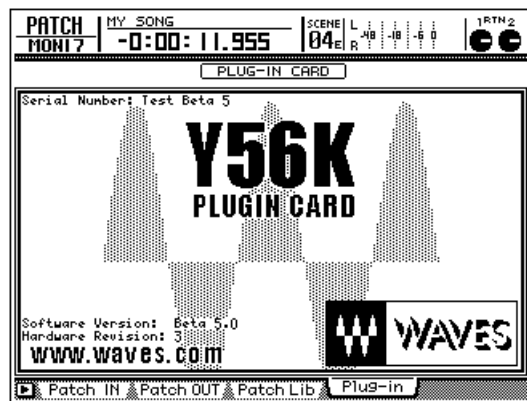
The settings of the I/O card will be saved in the current song.

Restoring to an I/O card

When an AW2816 scene is recalled (or when a song is loaded), the MEM.BANK settings are automatically restored to the I/O card in option slot.

However if necessary, you can also perform the restore operation manually. The procedure is as follows.

- 1 Press the [PATCH] → [F4] key to access the Plug-in page.



- 2 Hold down the [SHIFT] key and press the [F2] (Restore) key.

A popup window will appear, allowing you to restore the I/O card settings.



- 3 Move the cursor to the MEM.BANK button, and press the [ENTER] key.

If the memory bank already contains data, the bank name will be displayed. If it does not contain data, the display will indicate "NO DATA!"

- 4 To execute the Restore operation, move the cursor to the OK button and press the [ENTER] key.

The saved settings will be loaded into the I/O card.