


# Song Filer Owner's Manual

## Contents

<b>What is the Song Filer? .....</b>	<b>2</b>
<b>Top display.....</b>	<b>3</b>
<b>Menu Bar .....</b>	<b>3</b>
<b>MIDI Device Setup .....</b>	<b>4</b>
MIDI Port Setup (Windows).....	4
OMS Port Setup (Macintosh) .....	5
<b>Receiving Files .....</b>	<b>5</b>
<b>Transmitting Files.....</b>	<b>7</b>
<b>Controls .....</b>	<b>9</b>
Deleting files .....	9
Renaming files .....	10
<b>Error Messages.....</b>	<b>11</b>

- Click on the **red-colored** text to jump to the related item in this manual.
- The software and this owner's manual are exclusive copyrights of Yamaha Corporation.
- Copying of the software or reproduction of this manual in whole or in part by any means is expressly forbidden without the written consent of the manufacturer.
- Yamaha makes no representations or warranties with regard to the use of the software and documentation and cannot be held responsible for the results of the use of this manual and the software.
- Copying of the commercially available music sequence data is strictly prohibited except for your personal use.
- The company names and product names in this Owner's Manual are the trademarks or registered trademarks of their respective companies.
- OMS® and  are trademarks of Opcode Systems, Inc.
- The screen displays as illustrated in this Owner's Manual are for instructional purposes, and may appear somewhat different from the screens which appear on your computer.

This owner's manual assumes that you are already familiar with basic Windows/Macintosh operation. If you are not, please refer to the owner's manual which came with your Windows/Mac OS software before using Song Filer.

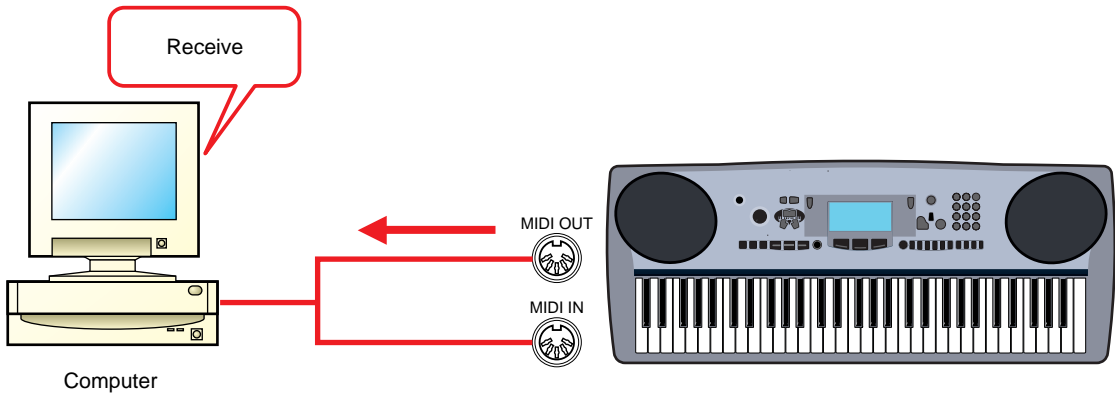
# What is the Song Filer?

With the Song Filer, you can receive and transmit data between your computer and your musical instrument. You can also use it to manage the files stored on your musical instrument via your computer. The Song Filer can perform the following three functions.

**NOTE** Make sure to connect both the MIDI IN/OUT terminals to the computer.

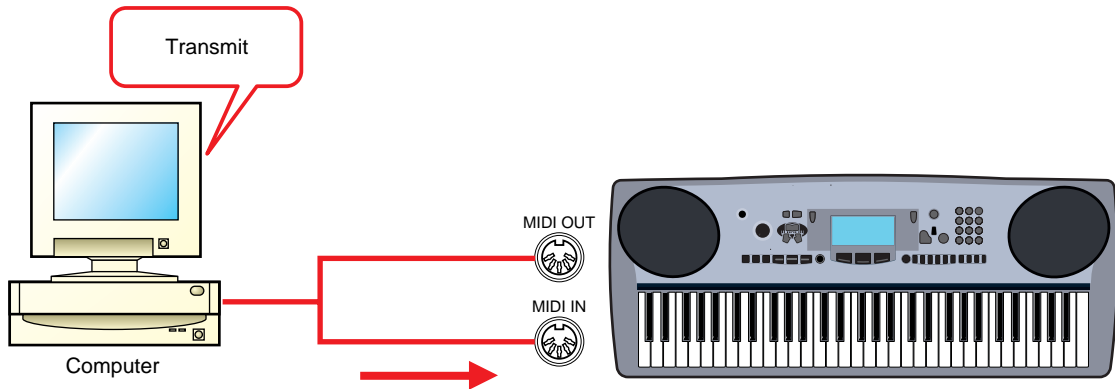
## Receive Files

You can save your musical instrument's song data on your computer (Page 5).



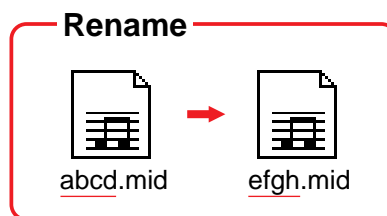
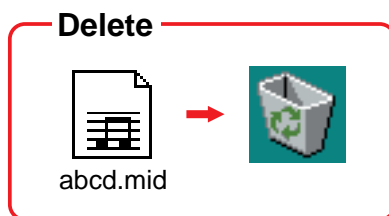
## Transmit Files

You can transmit song data from your computer to your musical instrument (Page 7).



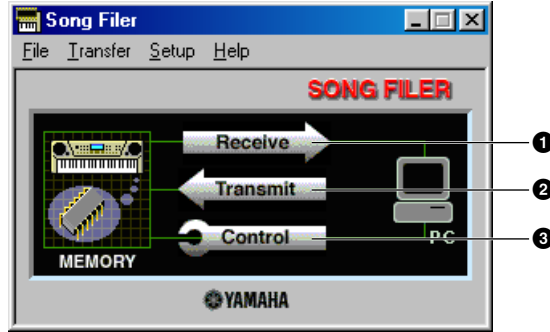
## Manage Files on Musical Instrument

You can delete and rename files on your musical instrument using your computer (Page 9).



# Top display

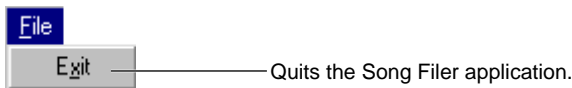
When you start the Song Filer, the “top display” will appear as shown below.



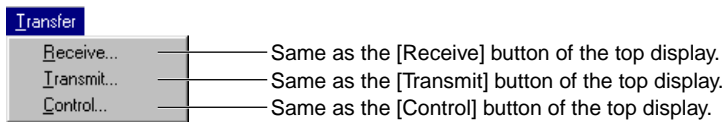
- 1 Opens the “Receive” window where you can transfer data from your musical instrument to your computer, then save it (page 5).
- 2 Opens the “Transmit” window where you can transfer data from your computer to your musical instrument (page 7).
- 3 Opens the “Control” window where you can delete and rename files on your musical instrument (page 9).

## Menu Bar

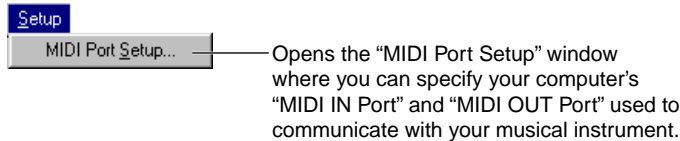
### File



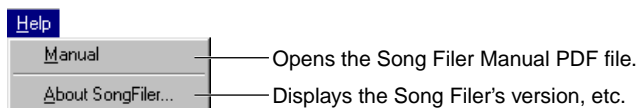
### Transfer



### Setup



### Help



# MIDI Device Setup

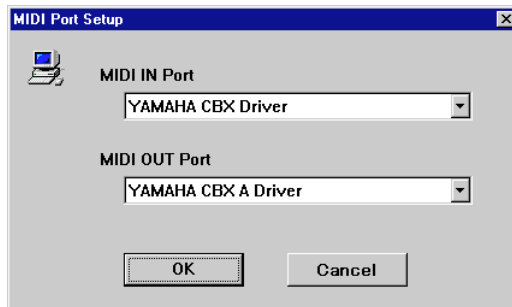
You will need to specify the MIDI device drivers through which your computer will communicate with your musical instrument. Follow the procedure below.

**NOTE** If you are using a Macintosh, refer to the section “OMS Port Setup” on page 5.

## MIDI Port Setup (Windows)

### 1. Select “MIDI Port Setup” from the “Setup” menu.

The “MIDI Port Setup” dialog box is displayed.



### 2. Click on each of the “▼” buttons for the “MIDI IN Port” or “MIDI OUT Port”, select the MIDI driver from the drop-down list that is displayed.

- **If the musical instrument’s MIDI terminals are connected to the computer via a MIDI interface.**

For both the “MIDI IN Port” and “MIDI OUT Port”, select the MIDI driver that is compatible with the MIDI interface you are using. For more information, refer to the manual that came with your MIDI interface.

- **If the musical instrument’s TO HOST terminal is connected directly to the computer’s serial port.**

Select the “Yamaha CBX Driver” for the “MIDI IN Port”, and the “Yamaha CBX A Driver” for the “MIDI OUT Port”.

**NOTE** YAMAHA CBX Driver must be installed beforehand.

### 3. Click [OK].

# OMS Port Setup (Macintosh)

The Song Filer software uses OMS (Open Music System) for MIDI input/output. To use the Song Filer software, OMS must be installed and set up correctly before starting the Song Filer.

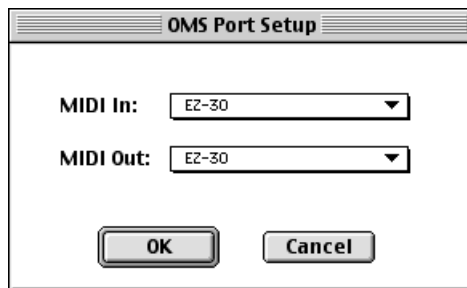
## 1. Start up the Song Filer by double-clicking its icon.

**NOTE** If AppleTalk is enabled, you will get an alert message. Click "Turn It Off." It will take some time for AppleTalk to be disabled.

## 2. Choose "OMS Port Setup" from the Song Filer's "Setup" menu, and the "OMS Port Setup" dialog box will appear.

## 3. Click [MIDI In] and [MIDI Out] to select the desired input/output ports.

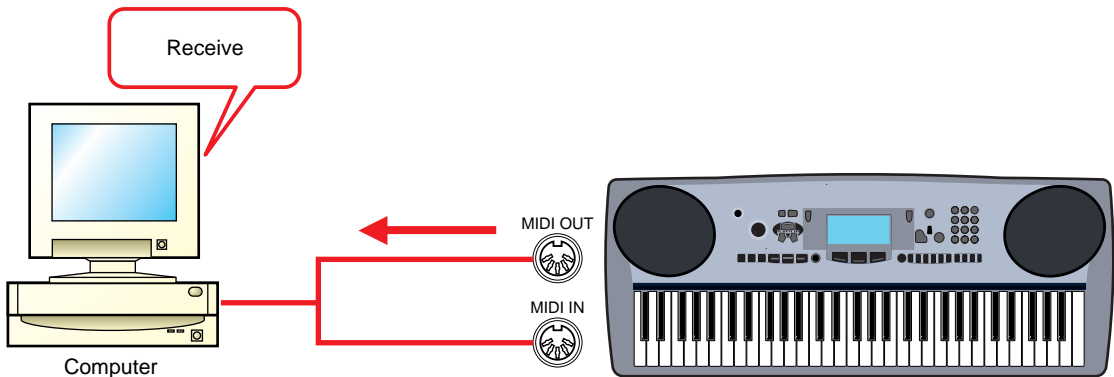
**NOTE** The displayed port names differ, depending on the current studio setup. If you connect your musical instrument via a MIDI interface, for details on selecting the ports, refer to the manual that came with the MIDI interface.



## 4. Click [OK] to close OMS Port Setup.

# Receiving Files

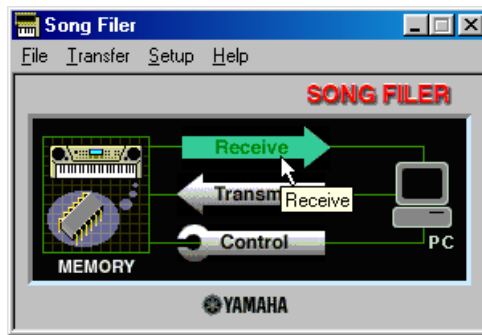
You can save your musical instrument's data on your computer.



**NOTE** You do not need to perform a bulk dump from your musical instrument.

# 1. Open the “Receive” window.

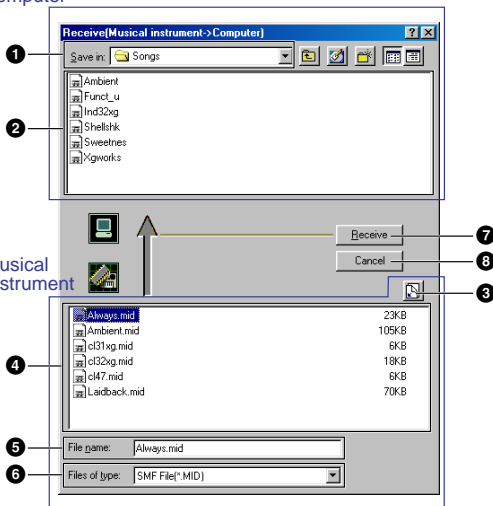
Click [Receive] in the top display.



The “Receive” window will open.

## Windows

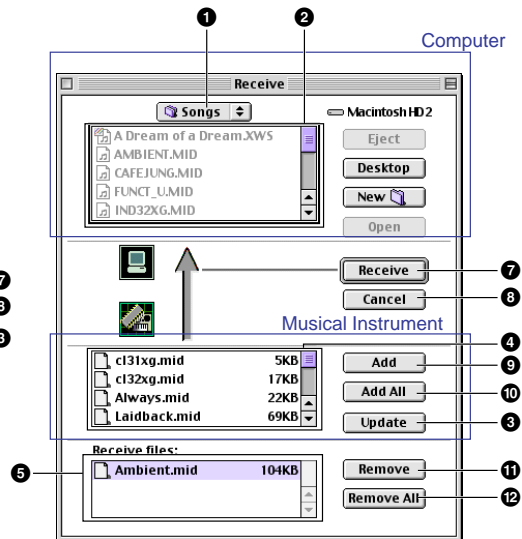
Computer



Musical Instrument

## Macintosh

Computer



## Computer

- ❶ **“Save in:”**: Click this and choose the destination folder (to save to) from the drop-down list.
- ❷ **File/folder list**: This shows the contents of the destination folder.

## Musical Instrument

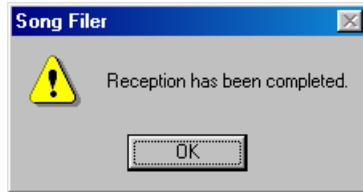
- ❸ **[Refresh (Update)]**: Click this to update the contents.
- ❹ **File list**: This shows the contents.
- ❺ **“File name (Receive files)”**: This shows the name of the file selected from the File list.
- ❻ **“Files of type:”**: Click this and choose the file type from the drop-down list, if necessary.
- ❼ **[Receive]**: Click this to begin receiving the file.
- ❽ **[Cancel]**: Click this to cancel the file transfer.
- ❾ **[Add]**: Choose a file and click this to add it to the “Receive files” list.
- ❿ **[Add All]**: Click this to add all files to the “Receive files” list.
- ⓫ **[Remove]**: Choose a file and click this to remove a file from the “Receive files” list.
- ⓬ **[Remove All]**: Click this to remove all files from the “Receive files” list.

## 2. Specify the file(s) and destination folder.

From the bottom list of musical instrument's files, choose the files you wish to transfer to your computer.

## 3. Click [Receive] to begin transferring data from your musical instrument to your computer.

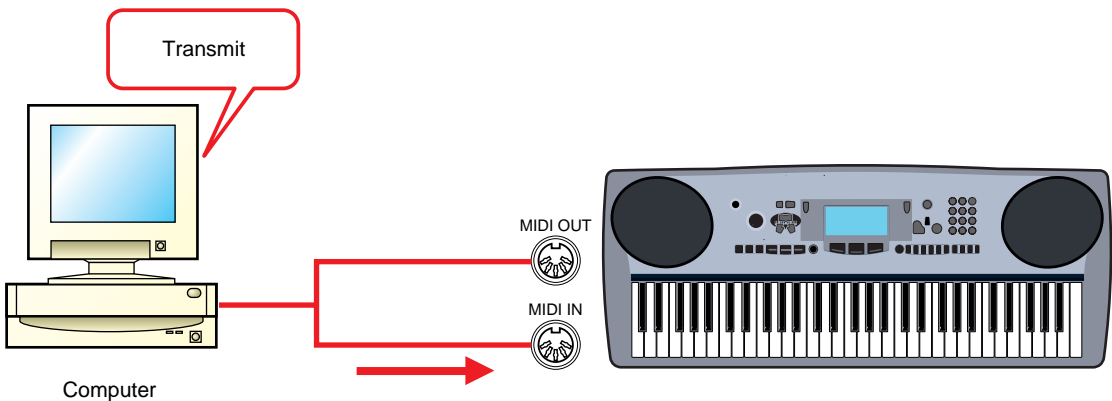
You will see the following message after the transfer is complete:



## 4. Click [OK] to return to the "Receive" window.

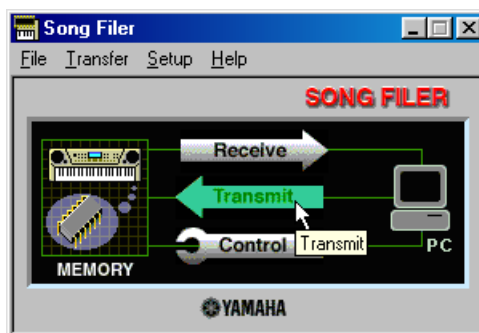
# Transmitting Files

You can transmit data from your computer to your musical instrument.



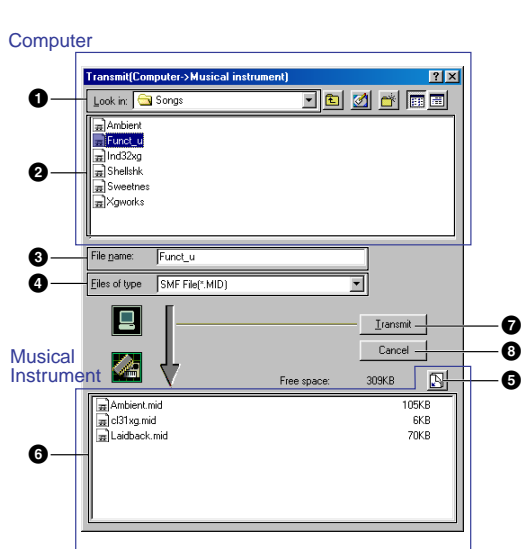
## 1. Open the "Transmit" window.

Click [Transmit] in the top display.

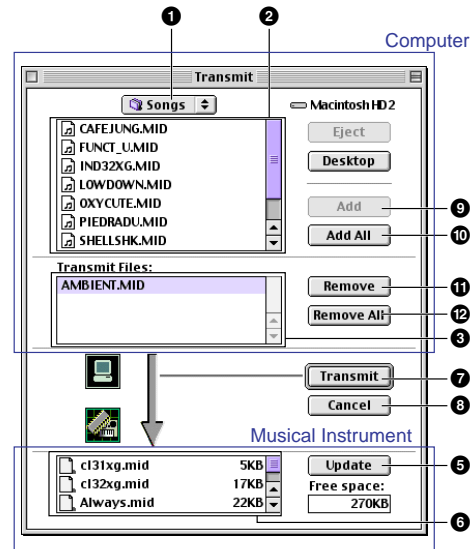


The "Transmit" window will open.

## Windows



## Macintosh



### Computer

- 1 **“Look in:”**: Click this and choose the source folder (to send from) from the drop-down list.
- 2 **File/folder list**: This shows the contents of the source folder.
- 3 **“File name (Transmit Files):”**: This shows the name of the file selected from the File/folder list.
- 4 **“Files of type:”**: Click this and choose the file type from the drop-down list, if necessary.

### Musical Instrument

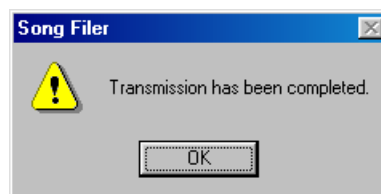
- 5 **[Refresh (Update)]**: Click this to update the contents.
- 6 **File list**: This shows the contents.
- 7 **[Transmit]**: Click this to begin transmitting the file.
- 8 **[Cancel]**: Click this to cancel the file transfer.
- 9 **[Add]**: Choose a file and click this to add it to the “Transmit files” list.
- 10 **[Add All]**: Click this to add all files to the “Transmit files” list.
- 11 **[Remove]**: Choose a file and click this to remove a file from the “Transmit files” list.
- 12 **[Remove All]**: Click this to remove all files from the “Transmit files” list.

## 2. Specify the file(s).

From the top list of files on your computer, choose those that you wish to transfer to your musical instrument.

## 3. Click [Transmit].

You will see the following message after the transfer is complete.

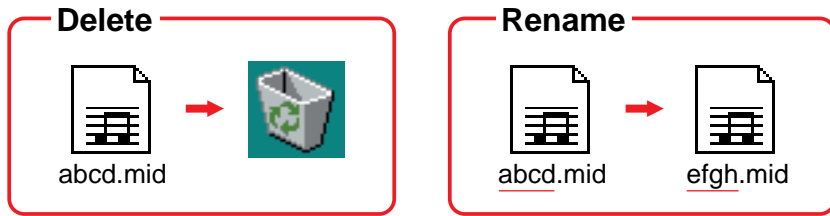


## 4. Click [OK] to return to the “Transmit” window.



# Controls

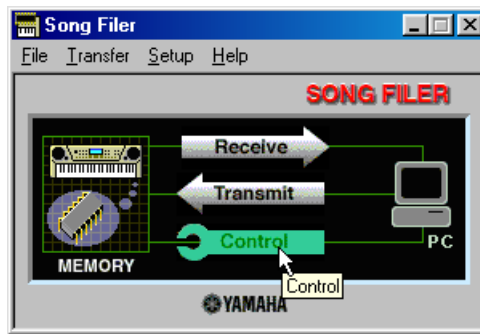
You can delete and rename files in the musical instrument using your computer.



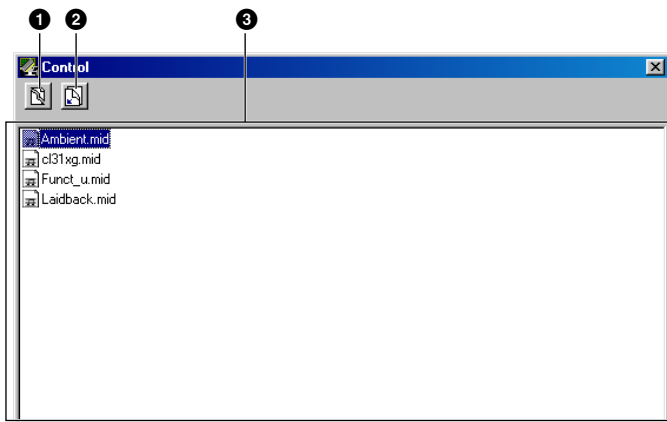
## Deleting files

### 1. Open the “Control” window.

Click [Control] in the top display.

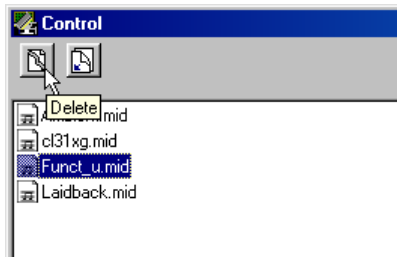


The “Control” window will open.



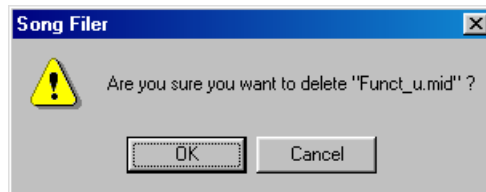
- 1 **“Delete” button:** Click this to delete the currently selected file. (A confirmation prompt will appear.)
- 2 **“Refresh” button:** Click this to update the contents.
- 3 **File list:** This shows the contents.

2. From the list, choose those file(s) that you wish to delete from your musical instrument.



3. Click [Delete].

You will see the following confirmation message:



4. Click [OK] to return to the “Control” window.

## Renaming files

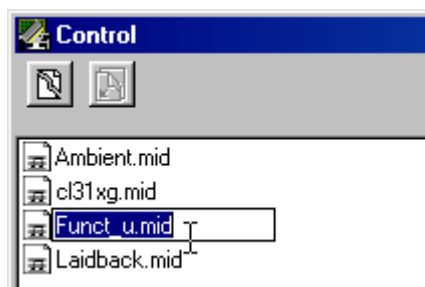
1. Open the “Control” window.

Click [Control] in the top display. The “Control” window will open.

**NOTE** For details about the “control” window, see [page 9](#).

2. Click the file that you wish to rename. Then click it again. Now enter a name for the file and press the [Enter] key.

**NOTE** A file name can consist of up to 8 characters plus a 3-character extension (extensions cannot be edited).



# Error Messages

## **“The selected MIDI device is in use. Quit any applications currently using the device.”**

This message is displayed when the Song Filer starts up and the MIDI driver is currently being used by another application. Click [OK], quit any applications that are using the MIDI driver, and start the Song Filer again.

## **“Cannot find the MIDI device. Confirm the MIDI device settings.”**

If the MIDI IN/OUT terminals are connected to the computer via a MIDI interface, install and set up the MIDI driver properly, referring to the manual that came with the MIDI interface. If the TO HOST terminal is connected to the computer, install YAMAHA CBX Driver and select the correct COM port, etc.

## **“OMS is not installed.”**

Install the OMS software and set it up properly.

## **“Data transfer failed. Confirm the musical instrument is connected to the computer properly (HOST SELECT switch and others).”**

Confirm the following and try the operation again.

- Is the musical instrument properly connected to the computer?  
If not, make the proper connections according to the instructions in the musical instrument's Owner's Manual.
- Is the musical instrument switched ON?  
If not, switch the power ON.
- Is the musical instrument's HOST SELECT switch set correctly?  
Make the correct the setting according to the instructions in the musical instrument's Owner's Manual.
- Is the driver properly set up? (Windows)  
If the TO HOST terminal is connected to the computer, install YAMAHA CBX Driver and select the correct COM port, etc.
- Set up OMS properly. (Macintosh)

## **“Data transfer is not possible in the current mode. Designate a mode that allows data transfer by operating the musical instrument.”**

This message is displayed when the data transfer is disabled on your musical instrument (e.g. during playback, recording or recording-standby.)

**NOTE** The mode that does not allow data transfer differs, depending on the musical instrument.

## **“There is no room for creating “\*\*\*\*\*.\*” (File name).”**

The file could not be saved to the musical instrument because the memory is full.

## **“Specify up to 8 letters for the file name and up to 3 for the extension.”**

A file name can consist of up to 8 characters plus a 3-character extension (extensions cannot be edited).